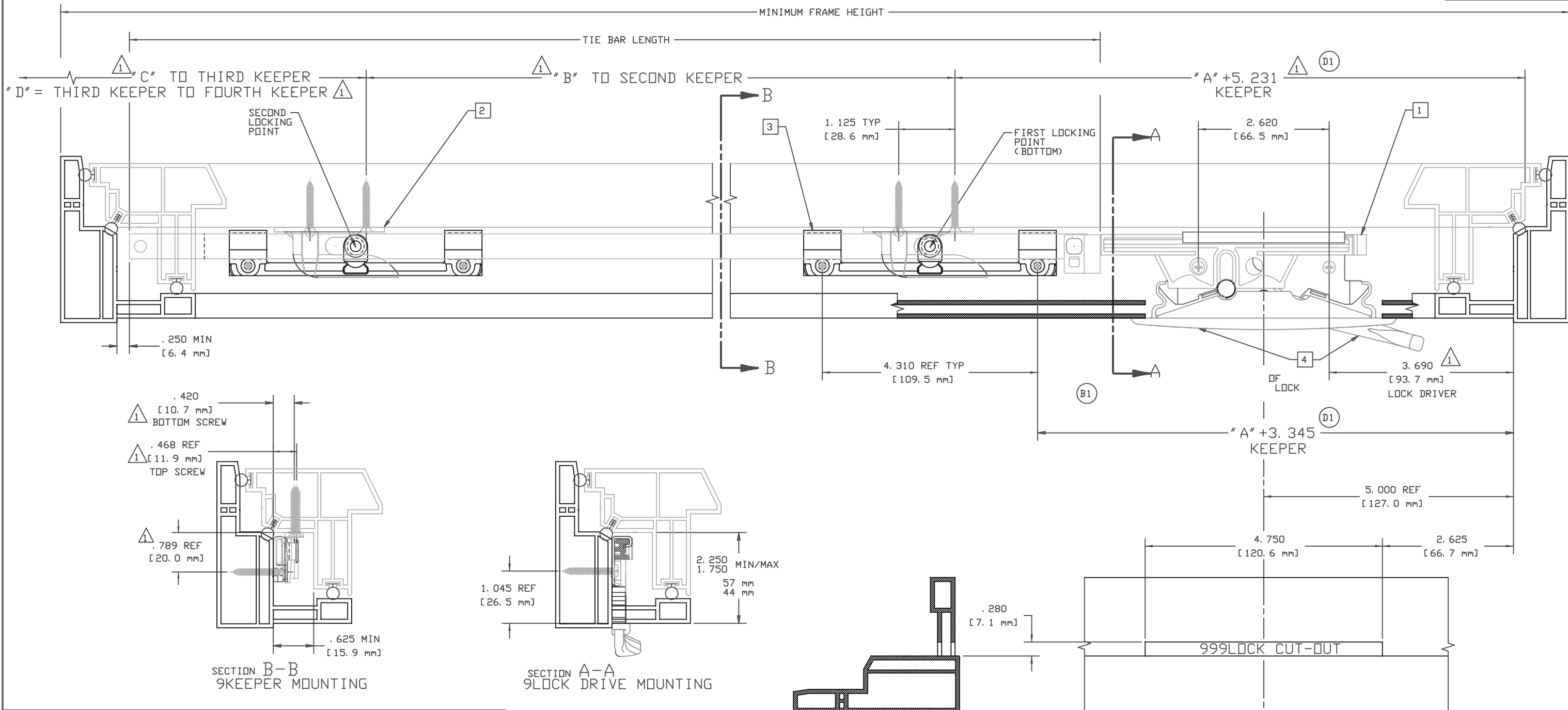


NO.	LOC.	REV.	DATE	INT.
A		CREATED	12/06/06	TR
B1		REMOVED	05/01/07	TR
		UPDATE MATRIX		
C1		UPDATED DIMENSIONING	06/11/07	TR
D1		UPDATED DIMENSIONING OF 1ST KEEPER AND TBG	11/02/10	TR

SIZE: DRAWING NO. D1 GENERIC CC



APPROXIMATE FRAME HEIGHTS	# OF LOCK POINTS	LH	RH	TIE BAR LENGTH	"A" DIM	"B" DIM	"C" DIM	"D" DIM
75.22'-80.21'	4	13002.92	13003.92	81.44	24.603	24.603	24.603	
68.22'-74.21'	4	13000.92	13001.92	75.44	22.603	22.603	22.603	
62.22'-68.21'	4	12897.92	12898.92	69.44	20.603	20.603	20.603	
75.22'-80.21'	3	12998.92	12999.92	63.44	27.905	27.905		
68.22'-74.21'	3	12891.92	12892.92	57.44	24.905	24.905		
62.22'-68.21'	3	12889.92	12890.92	51.44	21.905	21.905		
56.22'-62.21'	3	12895.92	12896.92	45.44	18.905	18.905		
	2	12887.92	12888.92		37.810			
50.22'-56.21'	3	12893.92	12894.92	39.44	15.905	15.905		
	2	12885.92	12886.92		31.810			
44.22'-50.21'	2	12883.92	12884.92	33.44	25.810			
38.22'-44.21'	2	12881.92	12882.92	27.44	19.810			
32.22'-38.21'	2	12879.92	12880.92	21.44	13.810			
26.22'-32.21'	1	12877.92	12878.92	15.44	13.685			
20.22'-26.21'	1	12875.92	12876.92	9.44	7.685			

ITEM #	PART NO.	1 PT.	2 PT.	3 PT.	DESCRIPTION
-	19051.92	2	4	6	#6 X 1 FLAT HEAD SHEET METAL SCREW T17(KEEPER)
-	19077.92	4	6	8	#6 X 1 PAN HEAD SHEET METAL SCREW(LOCK-TBG)
4	12662.XX	1	1	1	ENCORE TANG HANDLE AND ESCUTCHEDN
3	SEE CHART	1	1	1	ENCORE TIE BAR ASSEMBLY (CONTACT TECH SERV FOR PRDD#)
2	33593.93	1	2	3	STL KEEPER LH (33592.93 RH)
1	12871.93	1	1	1	ENCORE LOCK DRIVE ASSEMBLY

- NOTES:
- ACCURACY OF INDICATED DIMENSIONS IS CRITICAL TO THE FUNCTION OF THE MULTI-PNT LOCK.
  - "C" DIMENSION IS FOR THE THIRD LOCKING POINT AND ORIGINATES AT THE SECOND. "D" DIMENSION IS FOR THE FOURTH LOCKING POINT AND ORIGINATES AT THE THIRD.
  - "A" THRU "D" DIMENSIONS ARE CONFIGURED TO GIVE SEQUENTIAL AND PROGRESSIVE LOCKING OF 5/16" TOTAL, STARTING WITH THE FIRST(BOTTOM) LOCKING PNT WITH A PROGRESSION OF 5/32" FROM FIRST TO SECOND LOCKING PNT AND 5/32" FROM THE SECOND LOCKING PNT TO THE THIRD. THE FOURTH LOCKING PNT MOVES IN TANDEM WITH THE THIRD.
  - TIE BAR MOVES APPROX. 1.50"
  - MOUNTING SCREWS FOR ALL HARDWARE SHOULD PASS THROUGH TWO PVC WALLS OR A SINGLE WALL WITH AN INTERIOR STRUCTURAL INSERT.
  - ALL DIMENSIONS AFTER WELD.

THIS DRAWING CONFORMS TO ANSI Y14.5M - 1982

COMMENTS

TRUTH HARDWARE  
an FKI Industries Company  
700 West Bridge Street  
Davenport, IA 52806  
Telephone 507-451-3620

THIS DRAWING IS THE PROPERTY OF TRUTH HARDWARE. THE INFORMATION THEREIN IS TO BE TREATED AS CONFIDENTIAL. IT IS NOT TO BE USED, COPIED, OR DISCLOSED TO OUTSIDE PARTIES WITHOUT OUR WRITTEN CONSENT.

DRAWN BY M. NEFF DATE 12/06/06

CHECKED BY TRS SCALE FULL

PART NAME ENCORE LOCK CASEMENT APPLICATION WITH FLANGE KEEPER

PROFILE GENERIC DRAWING NO. GENERIC CC D D

DO NOT SCALE DRAWINGS